

Pandemic Flu

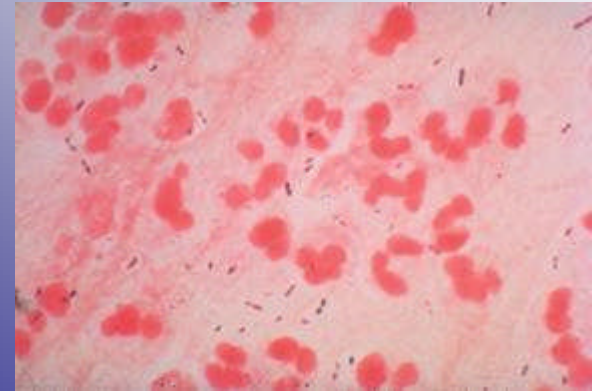
Bob Conder K4RLC
Graphics by Bobby Conder W4RPC



Flu Pandemic



Influenza
virus



Pneumonia
Bacteria

PANDEMIC

- When a disease causing serious illness spreads around the world and affects a large amount of people

Flu Pandemic

- Occurs when a new Flu virus emerges
- And...
- 1) Little/No immunity in humans,
- 2) Spreads quickly and easily from person to person world wide,
- And
- 3) Causes serious illness or death

Seasonal vs Avian Flu

- Season Flu
- Respiratory illness transmitted person to person
- Vaccine available
- < 2K die in NC yearly
- Flu occurs naturally in wild birds
- H5N1 variant; deadly to fowl; transmitted from birds to human
- No immunity
- No vaccine





N95 Particle Respirator

Origin



Guangdong
province

H5N1 Cases thru 2/15/07

Country	Cases	Deaths
China	22	14
Egypt	21	12
Indonesia	81	63
Thailand	25	17
Turkey	12	4
Vietnam	93	42
Worldwide	273	166

Edison's first Movie – Fred Ott's Snuff Sneeze

